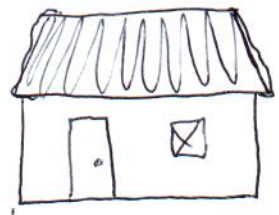
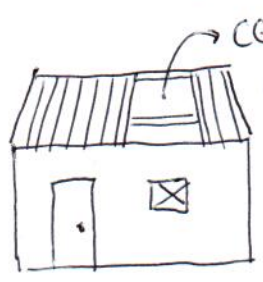


Partially damaged

- minor to partial damage, main structure sound, repairable home. Partially damaged ≈ substandard home.

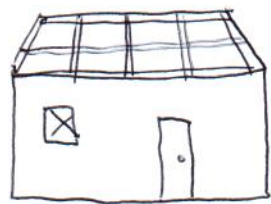


doors & windows missing

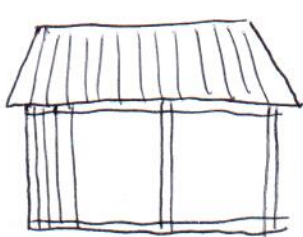
temporary grass roofing (non-seasonal)



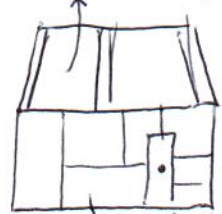
partial loss of walls, structure sound.



missing roof, structure sound



walls missing, structure sound.



Partial reconstruction/repair, resources may be exhausted. Conflict affected



general damage, maybe relating to abandonment, with/without roofing or windows/doors but structurally sound.

Shelter Severity Scale

- Category 0 - no damage
- Category 1 - minor } partially damaged, repair
- Category 2 - partial } partially damaged, repair
- Category 3 - severe } totally damaged, reconstruction
- Category 4 - destroyed } totally damaged, reconstruction

Totally damaged



burning, 100% damage. (tukuls)



buckled, not structurally sound



will need reconstruction



near total damage



structure mostly missing



collapsed tukul