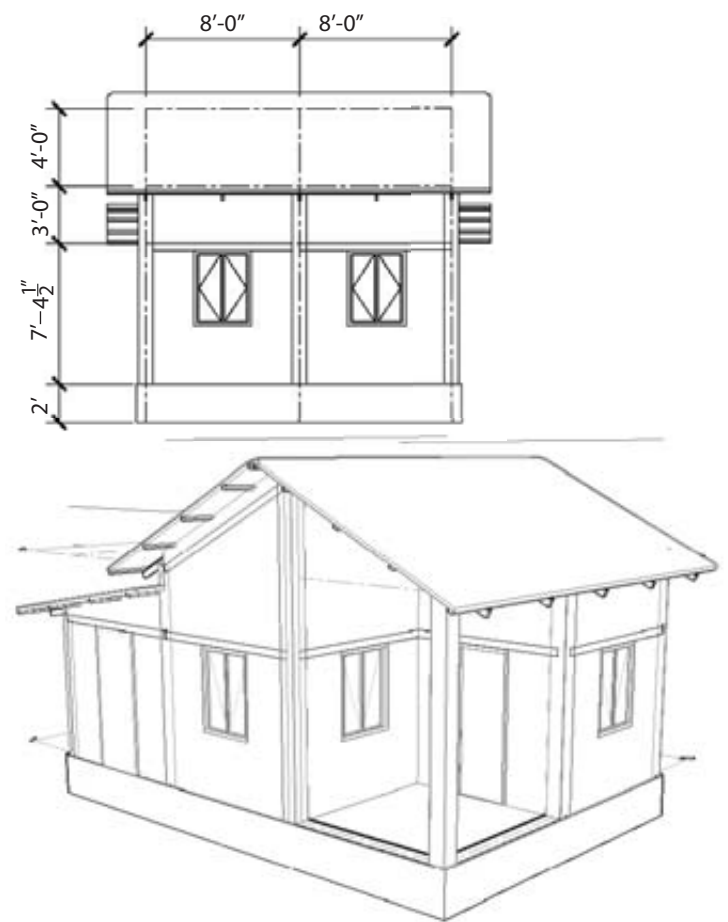
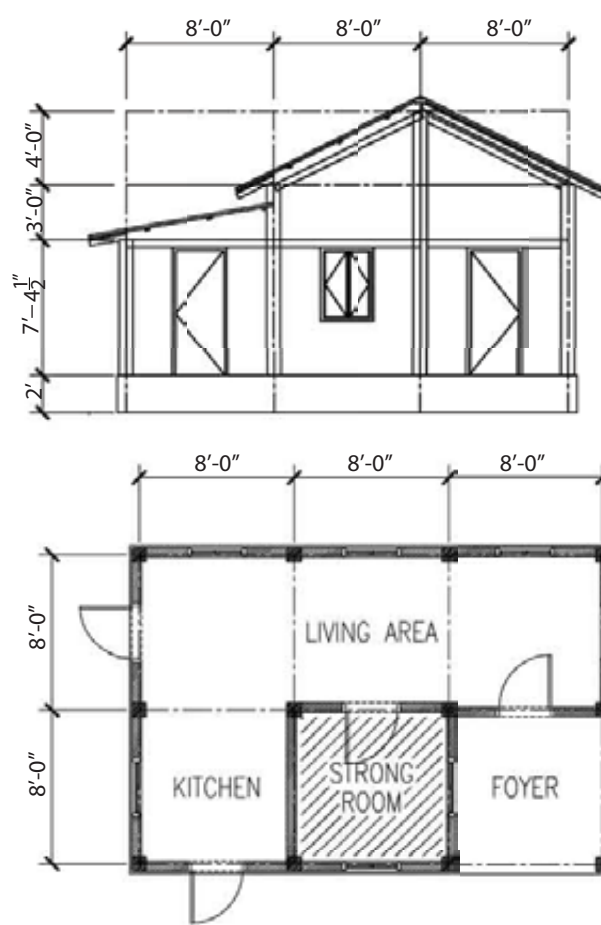


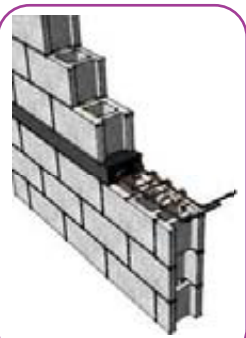
BUILDING BACK SAFER - BRICK SHELTER

Configuration

- Load bearing brick wall needed
- Heavy and rigid structure
- Vulnerable to earthquake forces
- One storey buildings are recommended
- Lintel bands have to be added at plinth level, window top level and wall top levels. They must be tied around the whole building
- Minimum foundation depth is 2' below ground
- Minimum retaining wall width is 9"
- Minimum wall thickness is 4.5"
- Minimum size of lintel is 9"x 4.5"



Construction Details

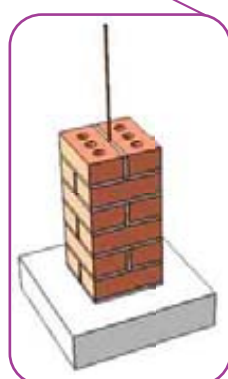
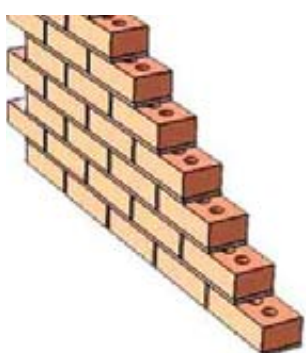


All Lintel Bands

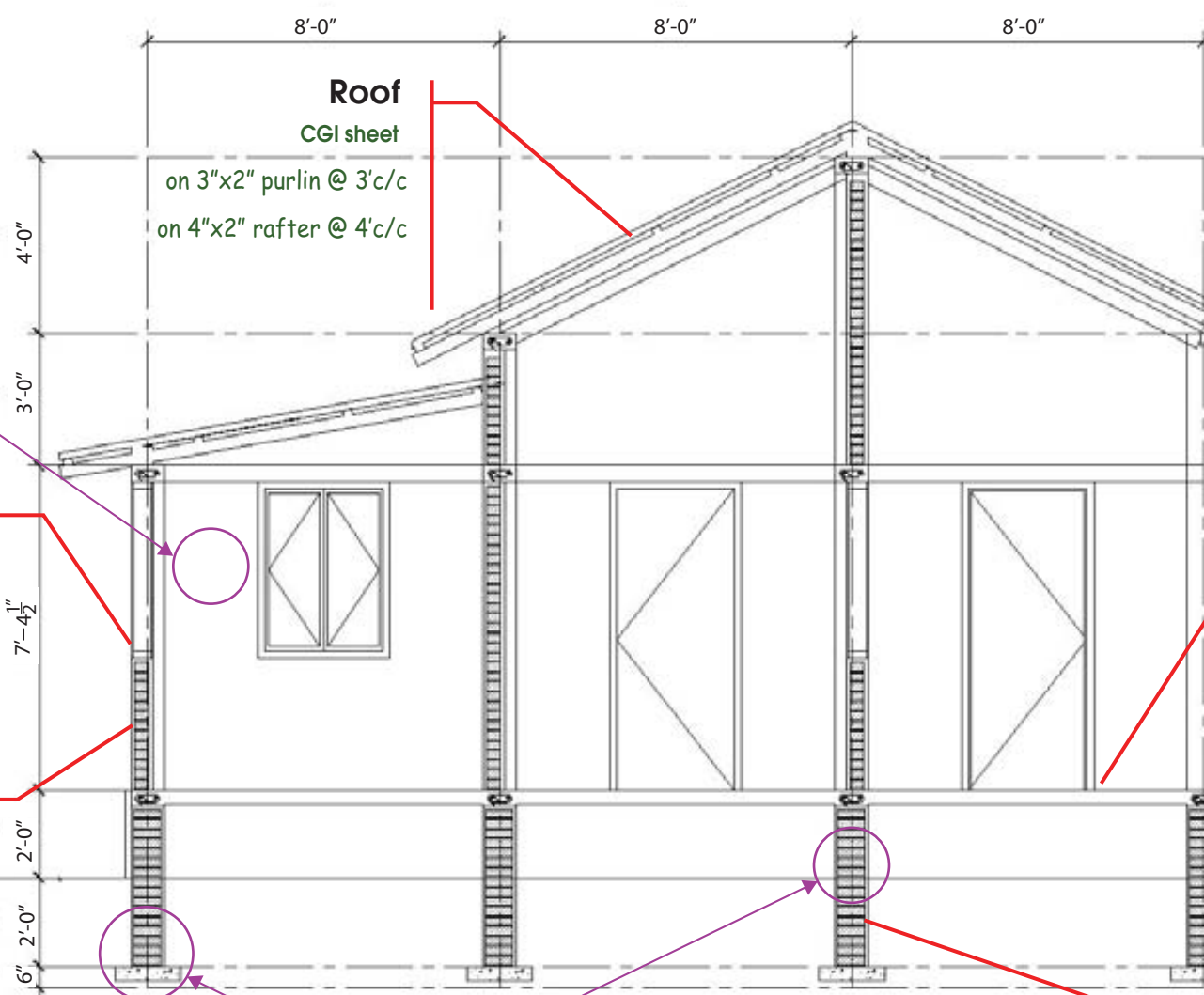
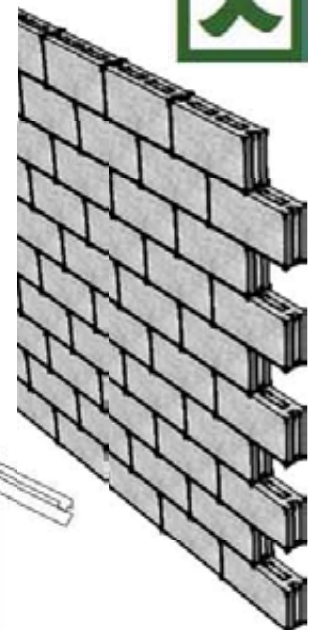
9"x4.5", 2d3/8"
d1/4"@4"c/c

Brick

Brick must be at least 4" thick



Do not use thin concrete blocks. Minimum thickness must be 4"



Slab

4" thick
1:3:6 concrete
On 6" compacted sand

Retaining Wall

At least 9" thick
On 18"x6" 1:3:6 concrete

Concrete	Mix	Cement	Sand	Stone	Water
with steel	1:2:4	△	△△	△△△△	▽
without steel	1:3:6	△	△△△	△△△△△△	▽
Mortar	1:4	△	△△△△		▽

Note: Ratio of water to cement is always 0.75 by volume