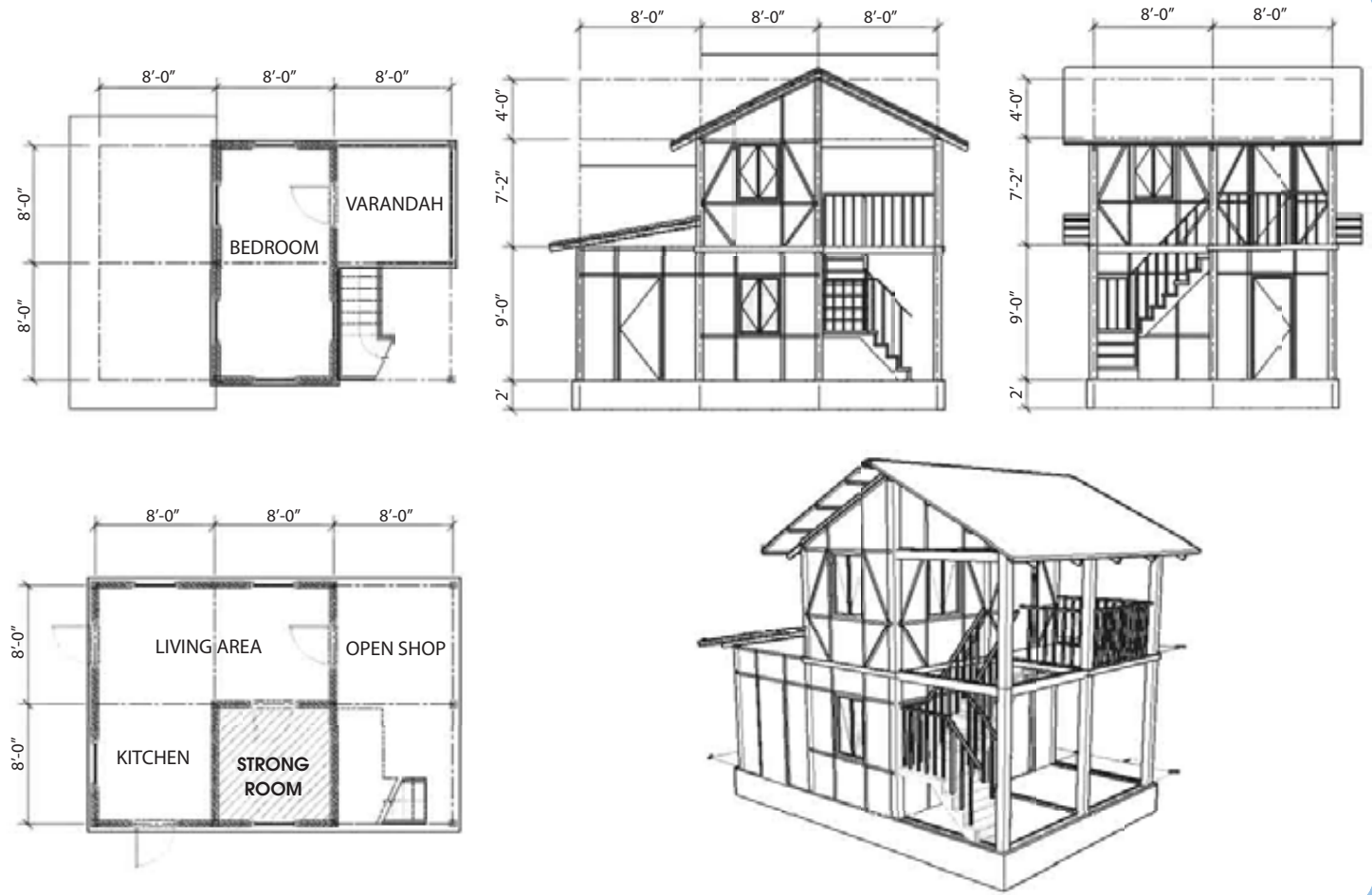


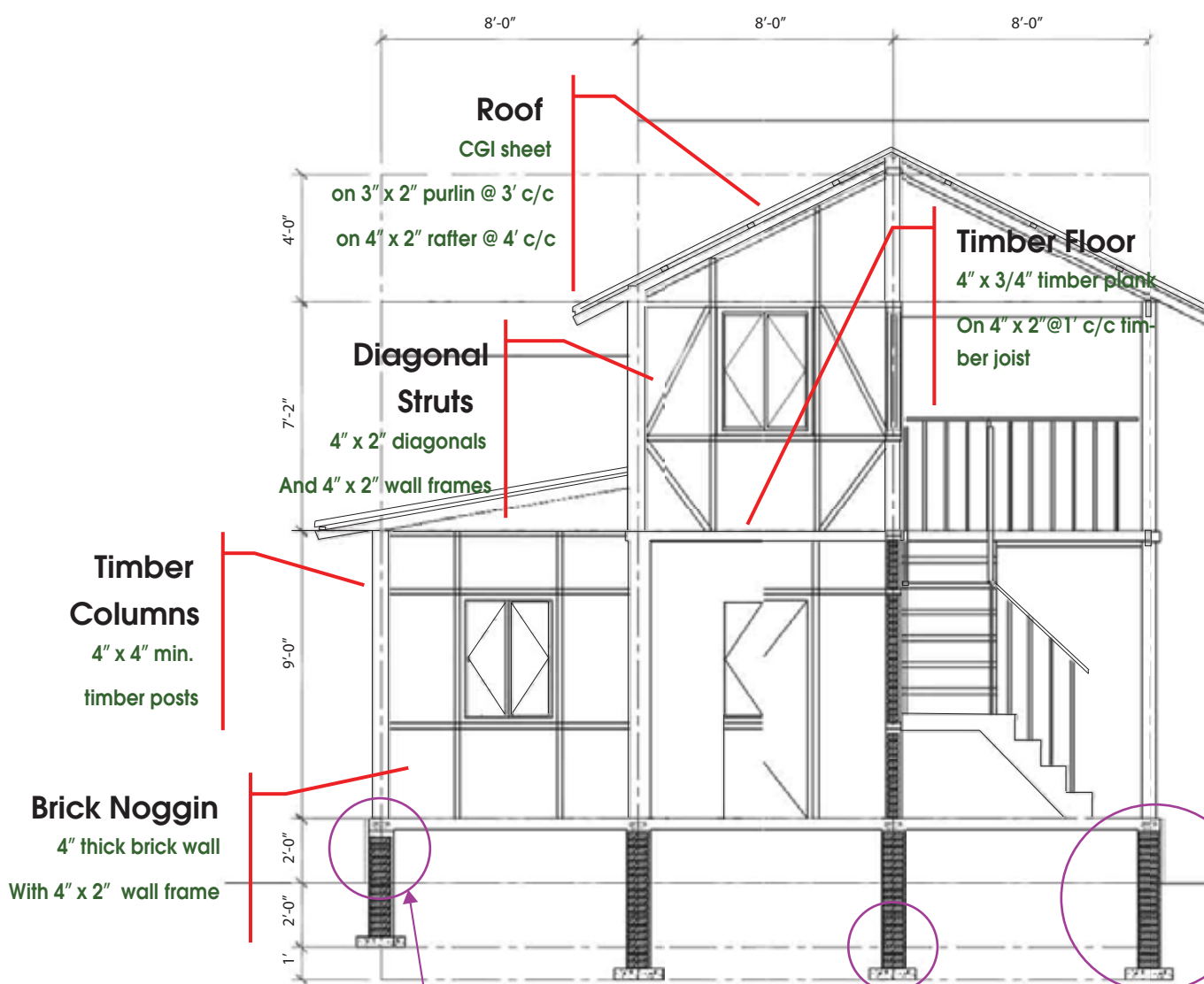
# BUILDING BACK SAFER - TIMBER SHELTER

## Configuration

- Timber columns and beams
- Light structure
- Recommends for up to 2 story only
- Diagonal bracings are essential. Bracings must be installed for open panels in each grid line.
- Minimum retaining wall width is 9"
- Minimum wall thickness is 4.5"
- Minimum size of diagonal bracing is 4" x 2"

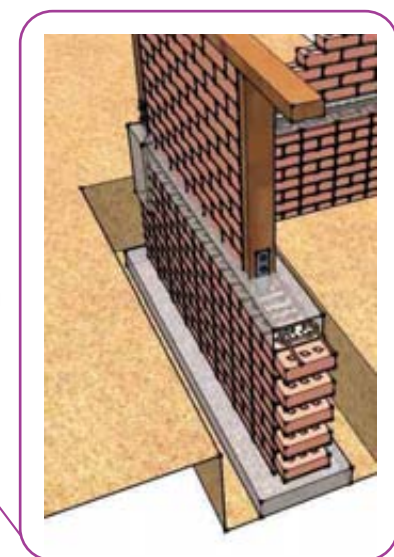


## Construction Details



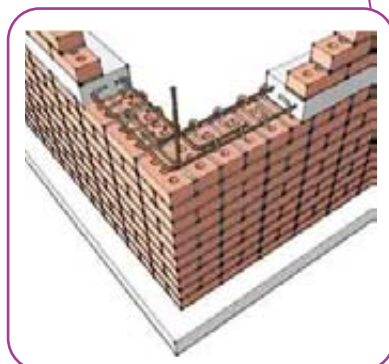
**Diagonal Bracings in Timber Wall**

Add 4" x 2" diagonal struts at the corners



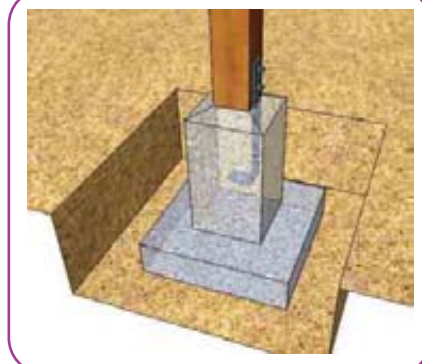
**Retaining Wall**

At least 9" thick on 18" x 6" 1:3:6 concrete strip



**Horizontal Bands**

Use 6" x 4" horizontal bands (with 2d 3/8" main and d1/4" @ 4" c/c) tie around the whole building.



**Tie Timber Post with Brackets**

Tie down timber posts with steel brackets

Concrete	Mix	Cement	Sand	Stone	Water
with steel	1:2:4	△	△△	△△△△	▽
without steel	1:3:6	△	△△△	△△△△△△	▽
Mortar	1:4	△	△△△△		▽

Note: Add same volume of water to cement