





6.0 in
10.5 in


Front




Demolition of houses can be dangerous.
If possible, seek technical support before risking your life.

- ✗   ✓
● Protect your head, hands, and feet from hazardous / falling objects



- ✗   ✓
● Work in pairs

- Cordon off the area and inform your neighbors prior to beginning demolition

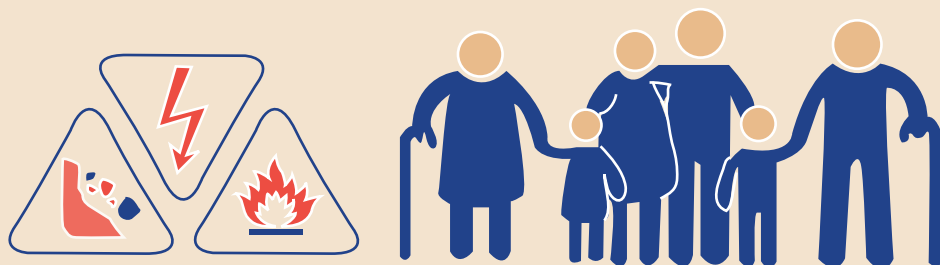


Demolition info for communities - Nepal
UNDP Nepal
Empowered lives.
Resilient nations.

6.0 in
10.5 in

Back

- Be aware of associated hazards (fire, electricity, falling objects)



Empowered lives.
Resilient nations.

- Start removing objects from the top, not the base



- Avoid climbing on unsafe buildings, use basic scaffolding to reach high areas and allow you to start from the top



- Register the damage of your house with the local authorities.

