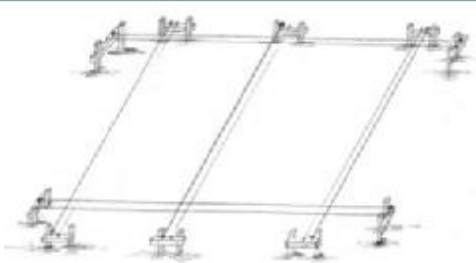
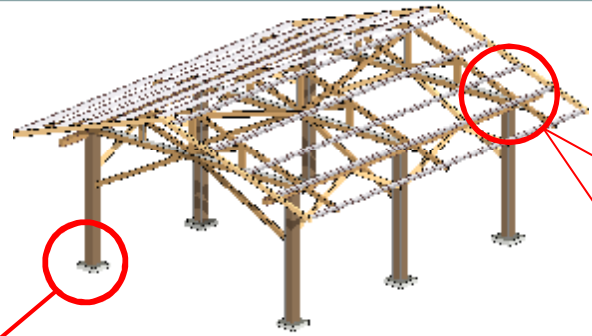


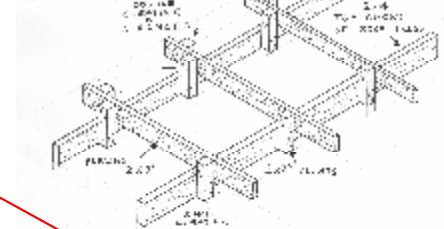
CARING FOR TYPHOON AFFECTED POPULATION



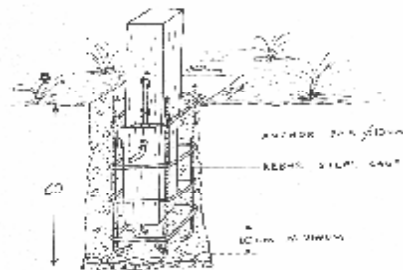
LAY - OUT



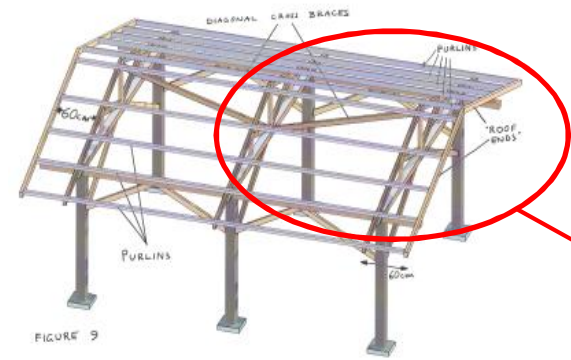
DOUBLE CLEATS ARE STRONGER



INSTALLATION OF PURLINS



INSTALLATION OF POSTS



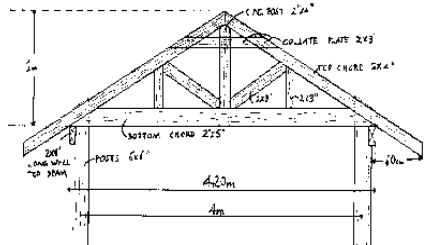
POSITION OF LONG BEAMS AT THE POSTS



OPTION 1

OPTION 2

OPTIONS 1 & 2 FOR THE BRACES



INSTALLATION OF TRUSSES

- Cement, sand and gravel with steel bars for reinforced concrete foundations
- Strong wooden structure with all tools and hardware to construct with 20 sq.m. house
- Reinforced roof using diagonal bracing and galvanized roofing sheets
- walls, doors, and windows made from wood and bamboo mat (sawali)